

## Registration Form

Registration forms are available at the Coastal Center and at [www.fos-cc.org](http://www.fos-cc.org)

Forms must be filled out completely. No one will be allowed to participate without a completed registration form and payment. *Adult Programs are for participants ages 18 and over. Thank you.*

Participant Name(s): \_\_\_\_\_

Phone: \_\_\_\_\_

Email: \_\_\_\_\_

**Programs** (please [✓]check all that apply):

Stingrays—Dive Deeper (10/20/09)

Activity Fee: \$4 MEMBERS / \$8 NON-MEMBERS\*

Oyster Reef Restoration (11/7/09)

Activity Fee: \$10 MEMBERS / \$15 NON-MEMBERS\*

Plankton—A Microscopic Experience (12/5/09)

Activity Fee: \$4 MEMBERS / \$8 NON-MEMBERS\*

Marine Science in the Movies (1/6/10)

Activity Fee: \$4 MEMBERS / \$8 NON-MEMBERS\*

Ecological Boat Tour (1/23/10)

Activity Fee: \$25\*

Ecological Boat Tour (2/10/10 - 4:30- 6:15)

Activity Fee: \$25\*

Ecological Beach Walk with Yoga (3/10/10)

Activity Fee: \$8 MEMBERS / \$12 NON-MEMBERS\*

Behind the Tank (3/31/10)

Activity Fee: \$4 MEMBERS / \$8 NON-MEMBERS\*

Total Amount: \_\_\_\_\_

\*General Admission is *not included* in Activity Fee, but *not required* to attend special programs.

*(Please complete other side and submit together with payment)*

## ADDITIONAL PROGRAMS & ACTIVITIES

Florida Oceanographic Coastal Center

### DAILY ACTIVITIES

Monday-Saturday 10 AM - 5 PM

Ray Feeding Program: 10:30 AM & 2:00 PM

Game Fish Feeding Program: 11:00 AM & 2:30 PM

Guided Nature Walk: 11:30 AM

Sunday 12 PM - 4 PM

Ray Feeding Program: 1:00 PM

Game Fish Feeding Program: 1:30 PM

Guided Nature Walk: 2:00 PM

### Seasonal & Holiday Activities

Lagoon & Beach Clean-ups

Volunteering

Lecture Series

New Programs are always popping up—check our website for updates!

Please contact us if you have any questions:

(772) 225-0505 ext. 118 or ext. 113

Miranda Kerr, Education Specialist

[mkerr@fos-cc.org](mailto:mkerr@fos-cc.org)



890 NE Ocean Blvd, Stuart, FL 34996

[www.fos-cc.org](http://www.fos-cc.org)



Florida  
Oceanographic  
Coastal Center

HUTCHINSON ISLAND • STUART

# ADULT EDUCATION PROGRAMS 2009-2010

## FALL & SPRING SCHEDULES

Take your Florida Oceanographic experience to the next level!

Learn more about our animals and ecosystems from scientific experts. Participate in hands-on activities that immerse you in our local environments.

### *Our Mission:*

*To inspire environmental stewardship of Florida's coastal ecosystems through education and research.*

Miranda Kerr

Education Specialist

(772) 225-0505 ext. 118

e-mail: [mkerr@fos-cc.org](mailto:mkerr@fos-cc.org)

## FALL 2009 SCHEDULE



### Stingrays—Dive Deeper!

Go beyond our daily stingray program to learn even more about our stingrays species and the latest scientific research on stingrays and sharks. Special guest speaker on elasmobranchs, graduate student Tricia Meredith, from Florida Atlantic University.

**Tuesday, Oct. 20th 6:30-8:00 PM**

**Activity Fee:** Members \$4 / Non-members \$8

### Oyster Reef Restoration with Dr. Vincent Encomio



Learn about Florida Oceanographic's oyster reef restoration efforts and the benefits to the lagoon. This experience includes hands-on activities to help with the research and even the chance to taste a sample of the bivalves!\*

**Saturday, Nov. 7th 9:00-11:30 AM**

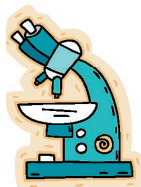
**Optional:** Bring-your-own lunch with Dr. Encomio from 11:30 am-12:00 pm.

**Activity Fee:** Members \$10 / Non-members \$15

*\*Fee includes a sample-serving of clams à la Encomio (and recipe) and more*

### Plankton—A Microscopic Experience

Explore the role of plankton in the Indian River Lagoon food web. Observe planktonic organisms under the microscope. Participate in data collection for NOAA's Phytoplankton Monitoring Network program.

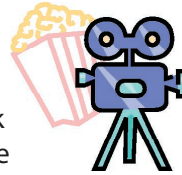


**Saturday, Dec. 5th 9:30-11:30 AM**

**Activity Fee:** Members \$4 / Non-members \$8

## SPRING 2010 SCHEDULE

### Marine Science in the Movies: Fact or Fiction?



From Jaws to Nemo, a scientific look at how the ocean and marine life are portrayed in Hollywood. Popcorn will be served!

**Wednesday, Jan. 6, 2010 6:30-8:00 PM**

**Activity Fee:** Members \$4 / Non-members \$8

### Ecological Boat Tours of the IRL with Capt. Nancy Beaver

Join us for a boat trip on the most biologically diverse estuary in North America.

**Saturday, Jan. 23rd 10:30 AM-12:30 PM OR**

**Wednesday, Feb. 10th 4:30 PM - 6:15 PM**

**Activity Fee:** \$25

### An Ecological Beach Walk with Yoga on the Beach



Enjoy a walk on the beach, learning about the ecology of our coasts. Then participate in a 45 minute beach yoga session with instructor Jennie Pawlowsky. Please bring a towel for the yoga portion.

**Wednesday, Mar. 10, 2010 5:30-6:45 PM**

**Activity Fee:** Members \$8 / Non-members \$12



### "Behind the Tank" with a Florida Oceanographic Aquarist

Hear interesting stories about our animals and observe the morning feeding, plus a Q & A session with an aquarist.

**Wednesday, March 31, 2010 9:00-10:30 AM**

**Activity Fee:** Members \$4 / Non-members \$8

## Registration Form

Date: \_\_\_\_\_

Total Amount: \_\_\_\_\_

### Payment Options:

Cash  Check # \_\_\_\_\_  Credit Card

(Please make checks payable to Florida Oceanographic)

Visa / MC / Discover Account No.: \_\_\_\_\_

Expiration Mo/Yr: \_\_\_\_\_ 3 digit CVC: \_\_\_\_\_

Zip Code on file with card: \_\_\_\_\_

Name on card: \_\_\_\_\_

### IMPORTANT

- A minimum of 6 participants is required for a class; Florida Oceanographic reserves the right to cancel any program due to under enrollment. *Activity fee will be refunded in full.*
- Registration is confirmed upon receipt of activity fee and on a first registered, first-served basis.
- Cancellation **MUST** be called in **one week** prior for Activity Fee refund to be granted. *"No Shows" will not be refunded.*
- Florida Oceanographic reserves the right to cancel any session. *Activity Fee will be refunded in full.*

### For completion by Staff only

Date run: \_\_\_\_\_

Amount run: \_\_\_\_\_

Staff initials: \_\_\_\_\_

Date entered in roster: \_\_\_\_\_

Staff initials: \_\_\_\_\_